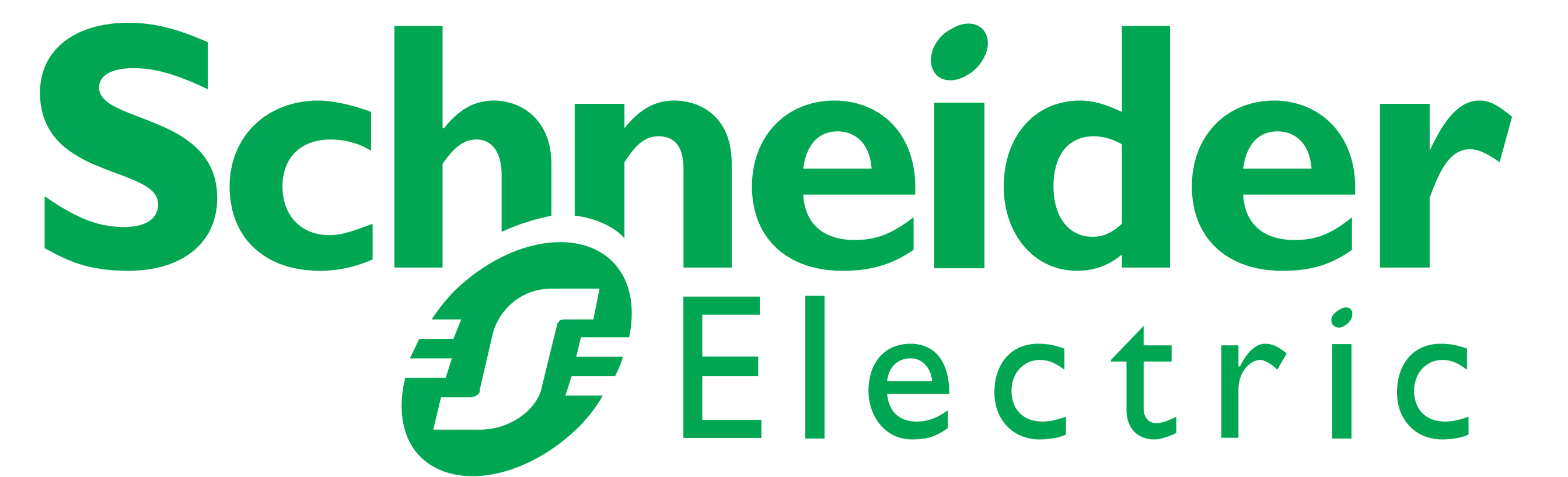




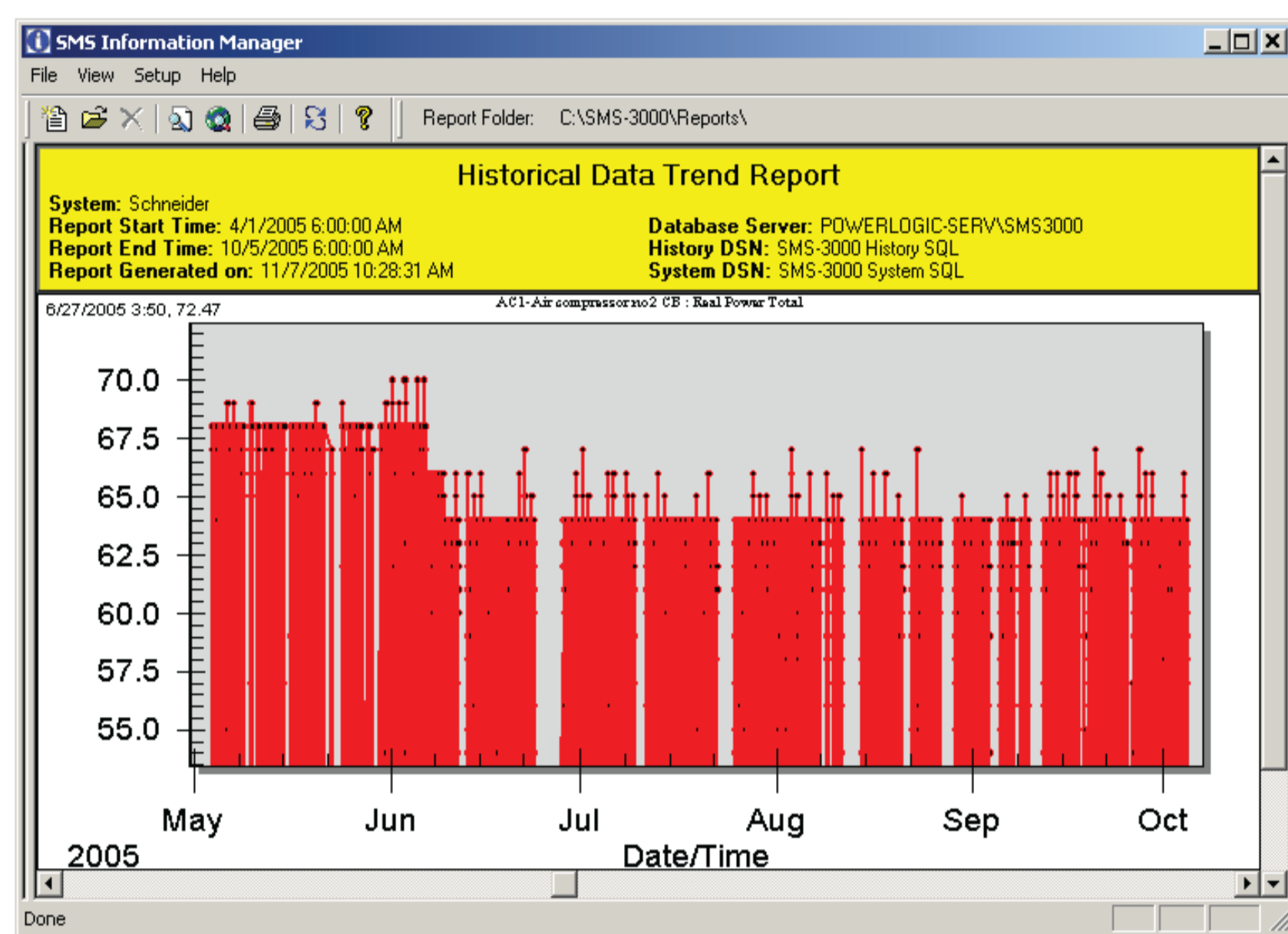
Significant energy savings in Schneider Electric's factory in Bangpoo



In 2005, Schneider Electric Thailand decided to reduce its large electricity consumption in its industrial facility in Bangpoo.

First step to success: Energy Consumption Monitoring

- Installation of PowerLogic monitors at node points, survey of electricity consumption and real time data logging through System Management Software (SMS)



Investment: 1.5 MTHB
Savings: 2 MTHB / year*
Payback: 9 months*

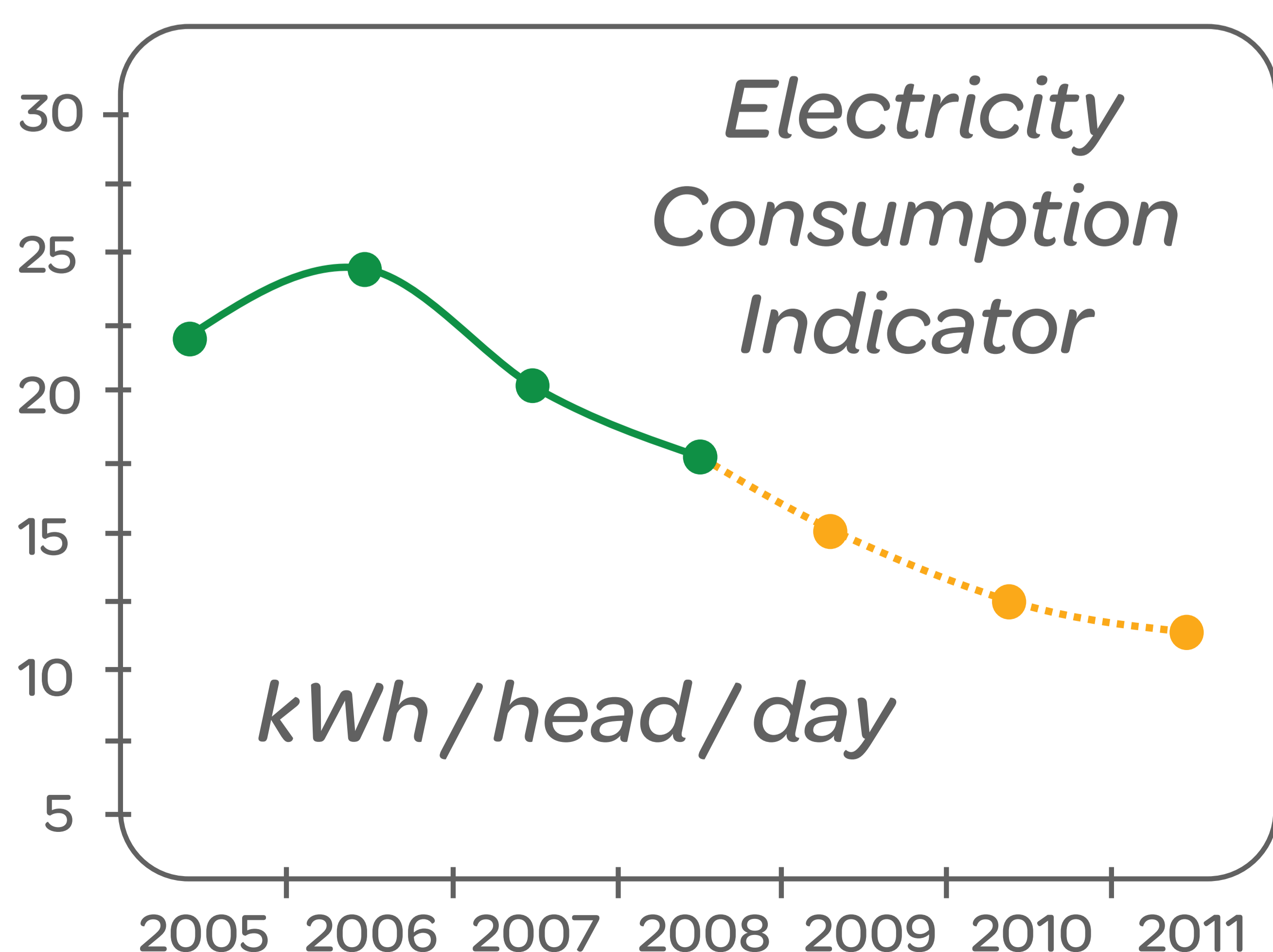
* During the first year of implementation

Water Pump Control

- Installation of a VSD (Variable Speed Drive) at the cool water pump for the chiller system to supply to the welding process



Investment: 167 kTHB
Savings: 57 kTHB / year
Payback: 2.9 years



Air-Conditioning Optimization and Control

- Time of use optimized according to employee presence in the different buildings through 4 control boxes comprising of PLC (Programmable Logic Controllers)
- Replacement of over-sized AC units as per actual room requirements
- Communication of awareness on appropriate use of AC



Investment: 158.5 kTHB
Savings: 122.6 kTHB / year
Payback: 16 months

Cooling System Optimization

- Replacement of R22 refrigerant with hydrocarbon which has a higher cooling capacity
- Integration of an evaporative pre-cooling filter for the air entering the condensing unit
- Maintenance on the condensing units



Investment: 423.5 kTHB
Savings: 488.3 kTHB / year
Payback: 10 months

Optimization of High-Pressure Air Supply

- Air pressure is reduced according to the industrial process requirements, therefore optimizing the workload of the air compressor

No Investment
Savings: 57 kTHB / year

25.6 % energy savings since 2006
236 MWh saved every year, the equivalent of 142 tons of CO₂

