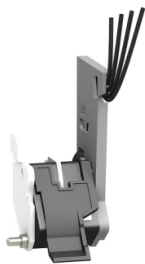


Product datasheet

Specifications



standard early make contact,
ComPact NSX100 to NSX630,
rotary handle position CAF, 2
changeover contact types

LV429346

Main

Range Of Product	ComPact NSX100...250 ComPact NSX100...250 DC ComPact NSX400...630 ComPact NSX400...630 DC
Range	ComPact
Device Short Name	2 early-make contacts
Product Or Component Type	Auxiliary contact
Device Application	Control
Range Compatibility	ComPact ComPact NSX ComPact ComPact NSX DC PowerPact PowerPact H PowerPact PowerPact J PowerPact PowerPact L

Complementary

Auxiliary Contacts Type	Standard
Auxiliary Contacts Operation	Early-make
Mounting Mode	Drawout
[Ith] Conventional Free Air Thermal Current	6 A
[Ie] Rated Operational Current	AC-12: 6 A at 110 V AC 50/60 Hz AC-12: 6 A at 220/240 V AC 50/60 Hz AC-12: 6 A at 24 V AC 50/60 Hz AC-12: 6 A at 380/440 V AC 50/60 Hz AC-12: 6 A at 48 V AC 50/60 Hz AC-12: 6 A at 480 V AC 50/60 Hz AC-12: 6 A at 660/690 V AC 50/60 Hz AC-15: 0.1 A at 660/690 V AC 50/60 Hz AC-15: 1.5 A at 480 V AC 50/60 Hz AC-15: 2 A at 380/440 V AC 50/60 Hz AC-15: 4 A at 220/240 V AC 50/60 Hz AC-15: 5 A at 110 V AC 50/60 Hz AC-15: 6 A at 24 V AC 50/60 Hz AC-15: 6 A at 48 V AC 50/60 Hz DC-12: 0.3 A at 250 V DC DC-12: 0.6 A at 110 V DC DC-12: 2.5 A at 48 V DC DC-12: 6 A at 24 V DC DC-14: 0.03 A at 250 V DC DC-14: 0.05 A at 110 V DC DC-14: 0.2 A at 48 V DC DC-14: 1 A at 24 V DC
Minimum Load	100 mA at 24 V DC

Packing Units

Unit Type Of Package 1	PCE
------------------------	-----

Disclaimer: This documentation is not intended as a substitute for and is not to be used for determining suitability or reliability of these products for specific user applications

Number Of Units In Package 1	1
Package 1 Height	4.0 cm
Package 1 Width	6.5 cm
Package 1 Length	8.2 cm
Package 1 Weight	66.0 g
Unit Type Of Package 2	S03
Number Of Units In Package 2	45
Package 2 Height	30.0 cm
Package 2 Width	30.0 cm
Package 2 Length	40.0 cm
Package 2 Weight	3.489 kg

Contractual warranty

Warranty	18 months
----------	-----------

Sustainability

Green Premium™ label is Schneider Electric's commitment to delivering products with best-in-class environmental performance. Green Premium promises compliance with the latest regulations, transparency on environmental impacts, as well as circular and low-CO₂ products.

Guide to assessing product sustainability is a white paper that clarifies global eco-label standards and how to interpret environmental declarations.

[Learn more about Green Premium >](#)

[Guide to assess a product's sustainability >](#)

Well-being performance

✓	Reach Free Of Svhc	
✓	Toxic Heavy Metal Free	
✓	Mercury Free	
✓	Rohs Exemption Information	Yes
✓	Pvc Free	
Reach Regulation	REACH Declaration	
Eu Rohs Directive	Compliant EU RoHS Declaration	
China Rohs Regulation	China RoHS declaration Pro-active China RoHS declaration (out of China RoHS legal scope)	
Weee	The product must be disposed on European Union markets following specific waste collection and never end up in rubbish bins	